



CLASS ACT[®] NG[®] GUIDE

WINFIELD[®]
UNITED



Class Act[®] NG

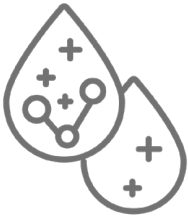
By WINFIELD UNITED

Adjuvant

GET MORE HERBICIDE EFFICACY FROM CLASS ACT NG

AMS-based water conditioner with surfactant and humectant

Class Act[®] NG[®] adjuvant offers an easy-to-use formulation that combines CornSorb[®] technology, a nonionic surfactant, and ammonium sulfate (AMS) for water conditioning in a high-performance liquid premix.



Water Conditioner

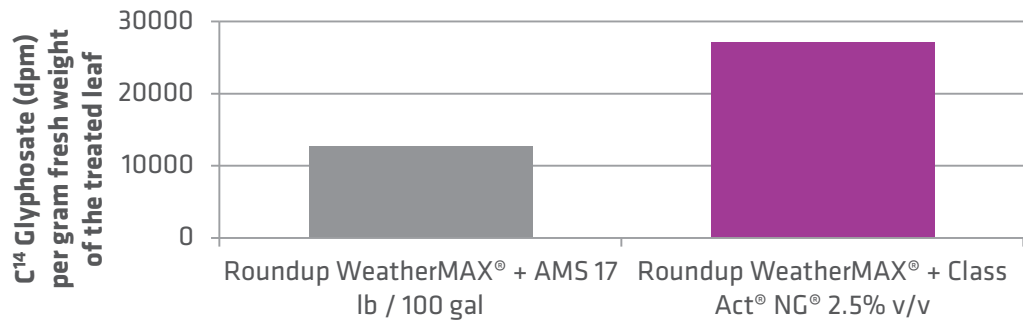


Surfactant

Features & Benefits

- Helps improve weed control with glyphosate and glufosinate applications
- Conditions water in the tank and works on the leaf surface to drive the herbicide into the plant
- Contains CornSorb[®] additive which increases uptake and speed of herbicide action
- Pre-dissolved liquid AMS – no nozzle plugging and sedimentation
- Formula designed to minimize foaming

Class Act NG doubles the amount of glyphosate in the plant compared to AMS-alone



Class Act [®] NG [®] (gallons)		Nonionic surfactant (quarts)		Dry AMS (pounds)
2.5	=	2.0	+	8.5
5.0	=	4.0	+	17.0



U.S. Patent Protected

Use Rate

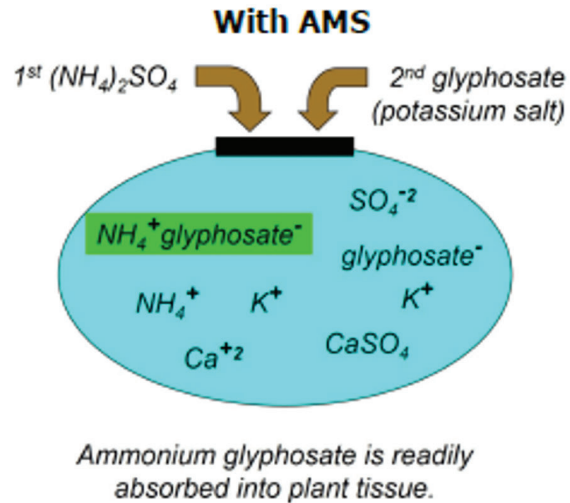
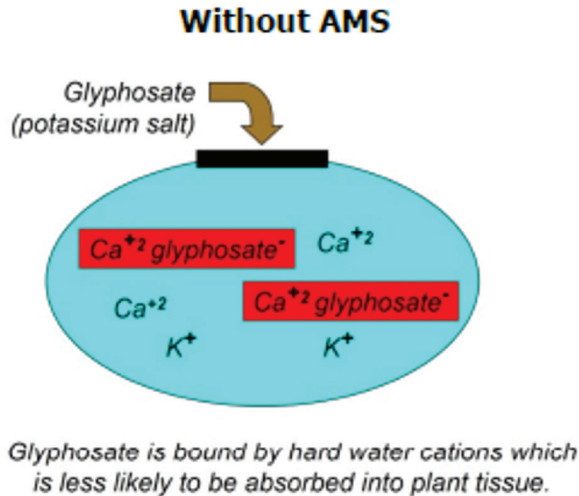
2.5-5 gallons per 100 gallons (2.5% to 5.0% v /v)

For more information visit winfieldunited.com

Always read and follow label directions. Class Act[®], CornSorb[®], NG[®] and WinField[®] are registered trademarks of WinField United. Actual results may vary. U.S. Patent No. 5,945,377 ©2022 WinField United.



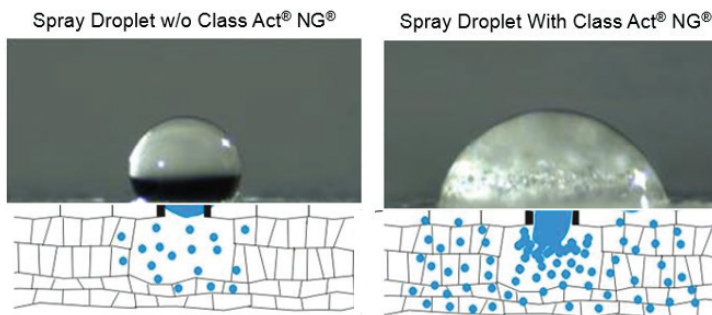
WHY DO WE NEED AMS?



INCREASED HERBICIDE UPTAKE WITH CLASS ACT® NG®

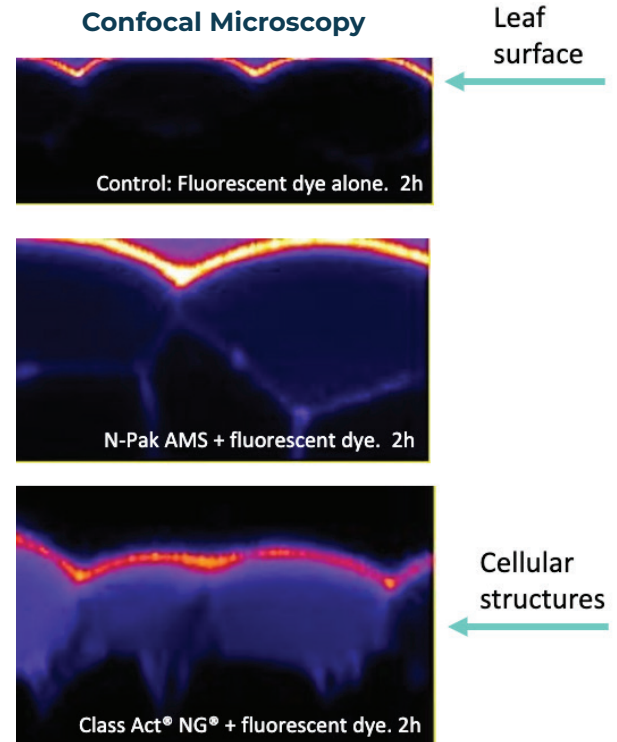
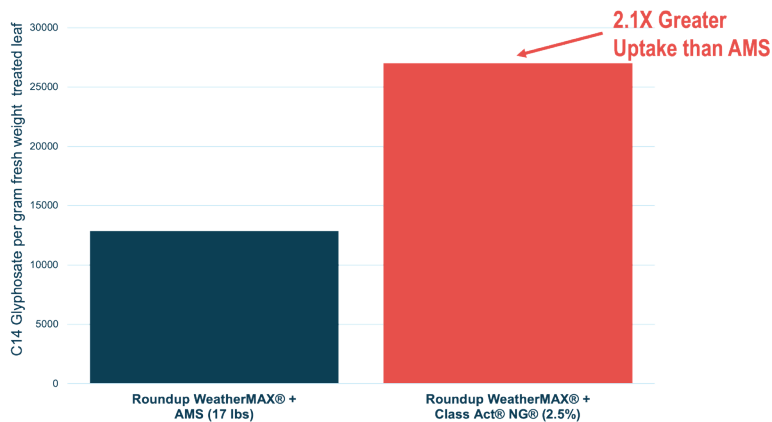
CORNSORB® TECHNOLOGY IN CLASS ACT PRODUCTS CAN INCREASE PESTICIDE UPTAKE IN TWO MAIN WAYS:

- Reduce surface tension to increase droplet spread for improved absorbency.
- Increased humectancy so droplets stay wet on the leaf, leading to more uptake before evaporation.



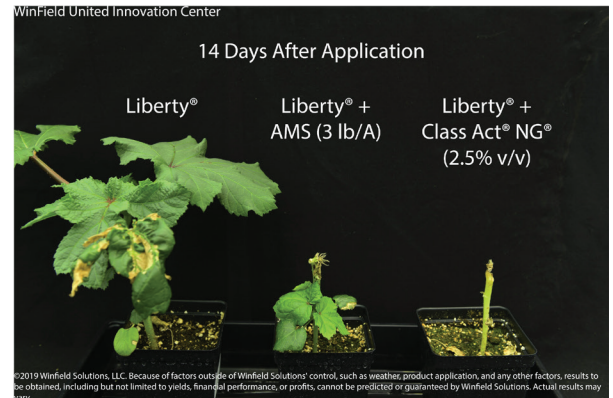
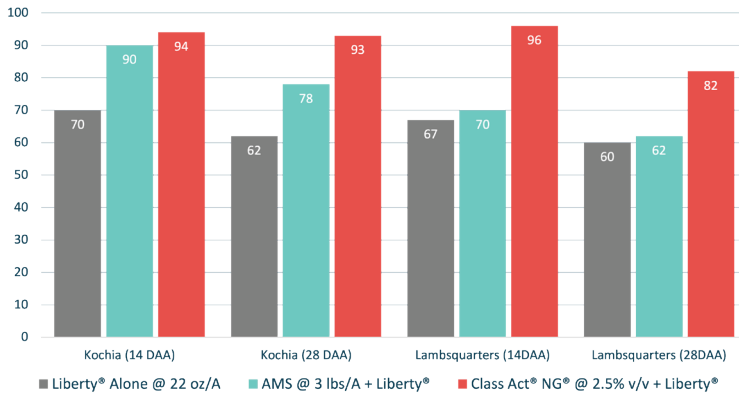
Use Rate 2.5 – 5.0% v/v (2.5 – 5.0 gal/100 gal)

RELATIVE GLYPHOSATE UPTAKE IN VELVETLEAF-TREATED LEAVES AS INFLUENCED BY ADJUVANTS



IMPROVED GLUFOSINATE WEED CONTROL WITH CLASS ACT® NG®

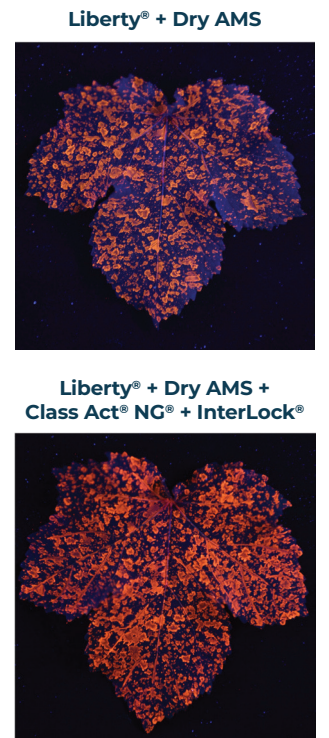
CLASS ACT® NG® PROVIDED BETTER CONTROL THAN AMS



ADDING CLASS ACT® NG® TO ENLIST ONE® IMPROVED 2,4-D UPTAKE INTO THE PLANT

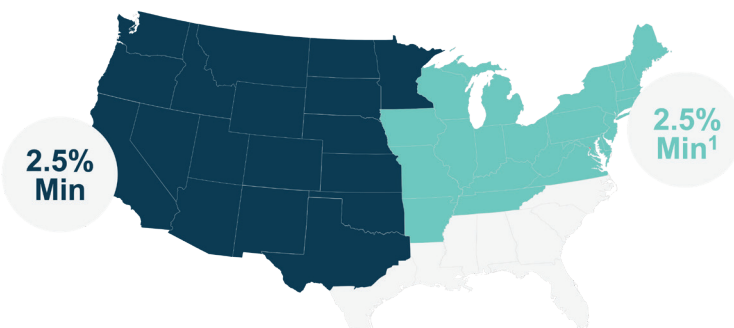
Treatment	2,4-D Concentration on Leaf (µg/mL)*, **	% 2,4-D Remaining on Leaf Surface of Total Applied 24 HAA†	% 2,4-D Uptake in Leaf 24 HAA¹
Enlist One® 32 fl oz/A	12.2 B	75.9 B	24.1B
Enlist One + Amsol™ (113 oz/A)²	9.4 AB	57.5 AB	42.5AB
Enlist One + Class Act® NG® (1.25% v/v)	6.4 A	39.7 A	60.3A
P-Value	0.00326	0.00282	0.00282¹

*Treatment means are the average of three replications from one leaf residue assay on soybean leaves in 2023 conducted at the WinField United Innovation Center. Means followed by the same letter are not statistically different by Tukey's Honest Significant Difference Test with a confidence of 95%.
 **16.29 µg/mL of 2,4-D (Enlist One; 2,4-D choline) was applied to the leaf surface. Treatment solutions were applied with a glass syringe (10 µL/leaf; 15 droplets) at a spray volume of 15 gal/A.
 †HAA=Hours after application
 ¹%2,4-D Uptake in Leaf 24 HAA quantified as (100- (%2,4-D Remaining on Leaf Surface of Total Applied 24 HAA) and p-value copied from %2,4-D Remaining on Leaf Surface of Total Applied 24 HAA
 ²Amsol at 113 oz/A is equivalent to 3 pounds of dry (spray-grade) AMS per acre.
 Location: River Falls, WI 2023



CLASS ACT® NG® IS INCLUDED IN BASF LIBERTY® GUARANTEE

Minimum Class Act® NG® Rates for Liberty® Herbicide Applications



Large weeds, drier environments, difficult weeds, weeds "hardened" off due to dry or cold conditions, and/or poor water quality (i.e., hard) require that a higher rate of Class Act NG or additional AMS be added for optimum control.

¹Can also use a reduced rate of Class Act NG with additional AMS equal to the amount of AMS in 2.5% v/v Class Act NG.

Treatment	Spray Coverage (%)
Liberty® + Dry AMS	42.3
Liberty® + Dry AMS + Class Act® NG® + InterLock®	73.1

*All treatment contained DayGlo pigment (1% v/v) and were applied at 20 GPA with AIXR11004 nozzles.
 **Orange fluorescence indicates presence of DayGlo pigment and location of spray solution on leaf surface.

©2024 WinField United. Liberty® is a trademark of BASF. Class Act®, InterLock®, NG® and WinField® are trademarks of WinField United. All other trademarks are owned by their respective companies.

Always read and follow label instructions. Because of factors outside of WinField United's control, results to be obtained, including but not limited to yields, financial performance, profits, losses or otherwise, cannot be predicted or guaranteed by WinField United.